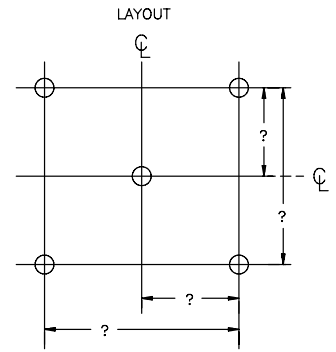


Quick-Quote Fax Hot Runner System

Contact Name: _____
 Company: _____
 Address: _____
 City/State/Zip: _____
 Phone: _____ Fax: _____

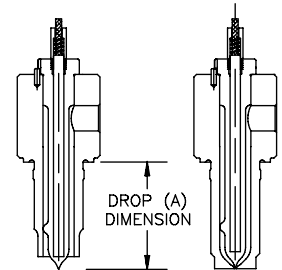
Please fax form to
 Rama Corp. Sales Dept at
 (866) 255-4414 Questions?
 Call us at (800) 472-5670

1. Number of drops(gates): _____
2. Drop 'A' Dimension: _____
3. Cavity-to-cavity centers: _____
4. Type of bushing required: Topless Gated
5. Nozzle Radius: 500 .750 Other
6. Resin Material: _____
7. Fill time (in seconds): _____
8. Type of probe leads Straight Right Angle
9. Total shot weight: _____
10. System size: Small Medium Large
11. Central distributor height: _____

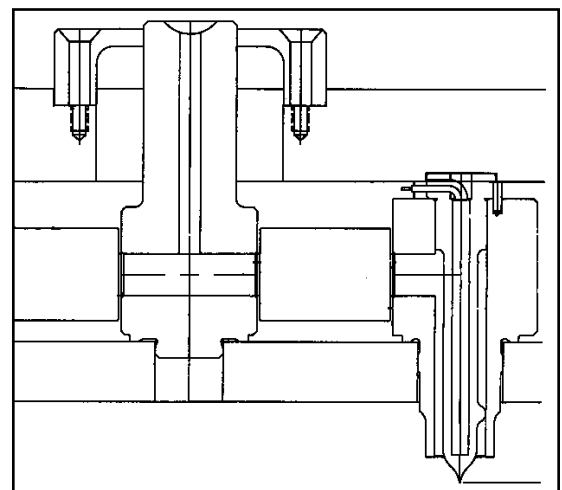


Please write any notes or comments below.

TYPE BUSHING REQUIRED



TOPLESS, GATED OR SPECIAL BUSHING



For a more detailed quote that includes hot-side base mold plates with your manifold installed and wired up to match your Rama controller, send us your mold design prints showing the mold base size, base MFG/catalog number or customer base drawings, along with number of zones in controller, voltage and any special requirements.



Order Form Hot Runner System

Contact Name: _____
Company: _____
Address: _____
City/State/Zip: _____
Phone: _____ Fax: _____

Please fax form to
Rama Corp. Sales Dept at
(866) 255-4414
Questions?
Call us at (800) 472-5670

1. Material : _____

2. Average Melt Temperature: _____

3. Shot Size: _____

4. System size:

Small Medium Large

5. Number of control zones required: _____

6. Thermocouple Type: J K

7. Should Rama supply a controller?

Yes No

8. Clamping Plate Thickness:

7/8" 1.0" 1-3/8" 1-7/8"

2.0" 2-3/8" Other _____

9. Machine Nozzle Radius:

.500" .750" Other _____

10. Type of probe leads:

Straight Right Angle

11. Drop Length - 'A' plate thickness

(if more than one list):

A= _____ B= _____ C= _____ D= _____

12. Type of Gate: Topless Gated

Other _____ Gate Diameter: _____

13. Should Rama supply the hot half mold plates? Yes No

14. Do you have mold prints available?

Yes No

15. Mold base manufacturer: _____

Catalog # _____

16. Mold base size:

Width • _____ Length • _____ Height • _____

17. Should Rama install and wire the system in hot half mold? Yes No

Please sketch your configuration below.

See list of standard configurations included in this manual for minimum drop to drop lengths.



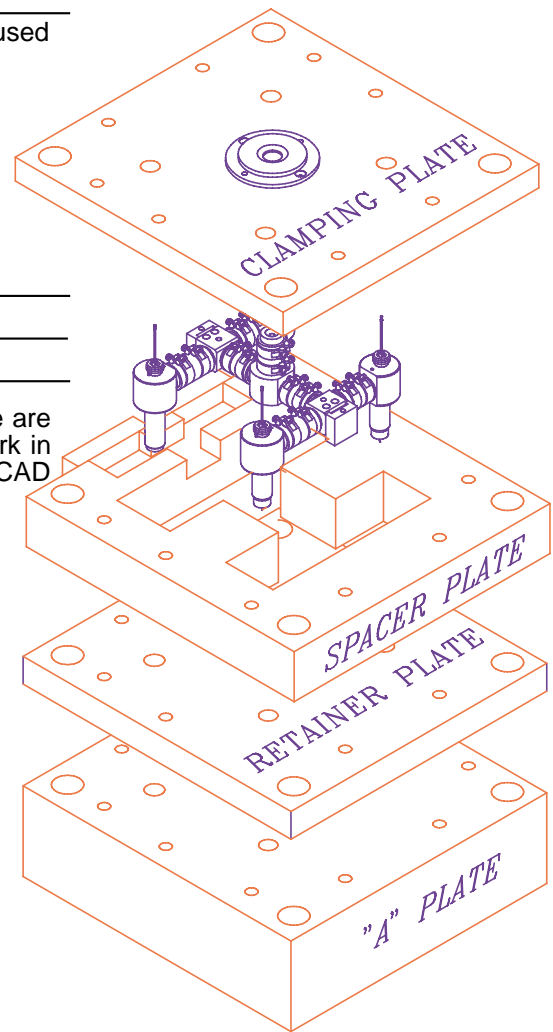
Quick-Quote Fax Hot Side Mold Base

Contact Name: _____
 Company: _____
 Address: _____
 City/State/Zip: _____
 Phone: _____ Fax: _____

Please fax form to
 Rama Corp. Sales Dept at
 (866) 255-4414
 Questions?
 Call us at (800) 472-5670

1. Clamping plate thickness: _____
2. Spacer plate thickness: _____
 Standards are 1-7/8" for small, 2-3/8" for medium and 2.875" for large systems or call out the custom thickness required
3. Optional retainer plate thickness: _____
 Standard thickness is 7/8". This plate is optional and is usually used with the topless bushing only.
5. 'A' plate thickness:
 - 1 piece construction (without a retainer plate)
 - 2 piece (with a retainer plate)
6. Overall base dimensions:
 Width: _____ Length: _____ Height: _____
- Stock base: Manufacturer: _____
 Catalog #: _____

If you are making a custom base, include prints of the base we are to match. If you prefer to perform some or all of the above work in house, Rama can provide telephone assistance and supply CAD files for your designers use.



To offer complete hot runner systems, Rama has formed nationwide strategic alliances with America's leading mold base builders for the manufacture of its hot side mold base plates. These plates are designed and manufactured to your exact specifications, insuring that each Rama system is precision matched to the mold base of your choice, meeting each of your exact requirements. When you order a complete system, you will receive the manifold fully installed in the hot side mold base plates, completely wired and electrically tested. All you do is bolt and run!